

BL!NDMAN

TECHNICAL RIDER Secret Masses

IMPORTANT:

- Possibility to lock the dressing rooms.
- People who arrive late are not allowed in the hall after the performance has started
- During rehearsals complete silence should be respected.
- Clear agreements around permanence and closing of the hall.
- Security of the technical equipment must be guaranteed.

GENERAL INFORMATION

Direction : Eric Sleichim
Music : Byrd, Sleichim, Ligeti, Nas, Wright
Producers : BL!NDMAN
Musicians : 4 singers BL!NDMAN [vox]
: 4 saxophones BL!NDMAN [sax]

Number of Technicians Company: 2

Number of technicians organiser

Load out: 3

Set up: 3 (1 video, 1 light, 1 sound)

During performance: 3 (1 light, 1 sound, 1 stage)

Break down: 3

Duration performance: 1h30min

Intermission: None

Parking space needed for: 1 van (Ford Transit) 4,8m 6,5m³

Arrival technical crew: 10am

Estimate set-up time: 6h

Estimate break down-time : 2h

Arrival time cast : 16h

BL!NDMAN

GENERAL VIEW:

The stage is divided in 3 levels. On the first level BLINDMAN [sax] will take place, on the second level BLINDMAN [vox]. On the highest level there will be 4 tables with 4 dj-sets upon them. These will be filmed by a camera and projected on a screen that hangs above the musicians. Both camera and screen will be provided by the company.

CHANGES:

During the performance, after 30 min., a TV will be rolled on to the middle of the stage. The TV has to be placed on a small platform with wheels and connected to a DVD player. Then the DVD will get started. These steps will happen on a cue from the company and via intercom.

BLINDMAN

EQUIPMENT

House

Sound

Speakers

FOH: 2 speakers with adapted cross-over and amplifiers+ subs (type: d&b or equivalent)
4 monitors on 3 sends

Mixing desk

Minimum 24/4/2 with phantom power (type: midas, soundcraft, yamaha)
To be placed in the hall.
Stereo EQ 33 bands (type: APEX)
Reverb (type: Lexicon PCM 80)

Mic's

4 condensator microphones

Lighting

Console

Type adb mentor (or equivalent)
To be placed in the hall, next to the sound engineer

Light

See the light-plan in attachment

Video

Projector min 4500 Ansi-lumen (with bnc connection) + bnc cable of camera (scene to projector)
1 TV (CRT, min. 33 inch)
1 DVD player (placed on the side stage and connected with the TV)
2 steels (2m) with harps for the placement of the projection screen (BLINDMAN)

Podium

8 chairs without armrests
5 musicstands with a full black body + light
6 platforms (4 on 80cm, 2 on 40) + stairs (1 on 80cm, 2 on 40)

BL!NDMAN

Bl!ndman

Sound

4 transmitter/recievers Shure + WH50T
4 turntables + mixing desks
DI rack

Light

4 Phillinea Philips
4 table-lamps

Video

1 Projection screen (6m op 1,5m)
Camera Canon to capture turntables

Podium

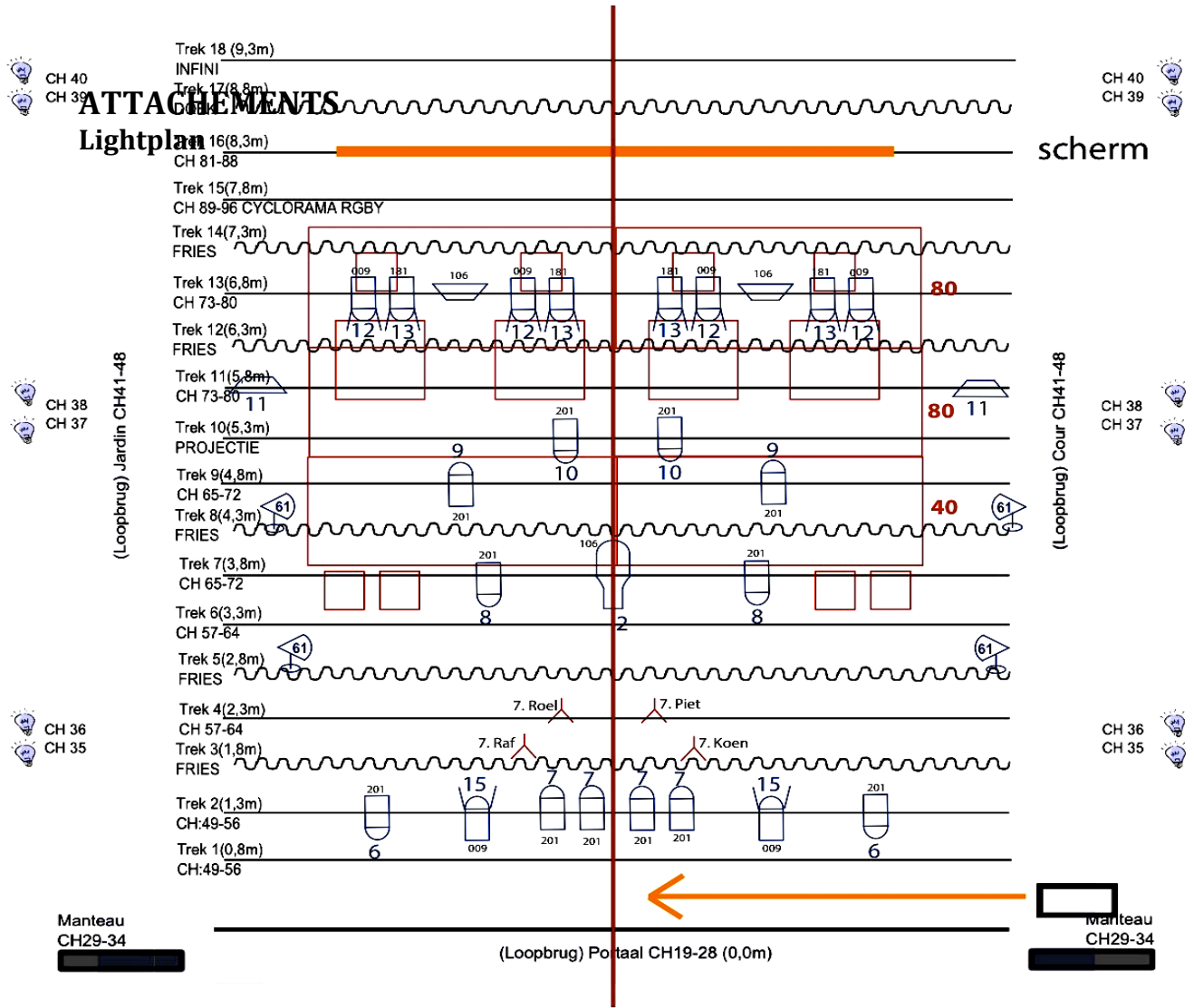
Small platform on wheels and knee straps for the placement of the TV.
4 tables for turntables

CONTACT

Technical manager: Brecht Beuselinck +32 476440126 brecht@blindman.be
Production manager: Jonas De Roover +32 485 30 98 01 jonas@blindman.be

BLINDMAN - SECRET MASSES

CC'T SCHALIKEN - HERENTALS



- Legende
- Profiel
 - PC
 - Par
 - Vloerstatief
 - TL (BLD)

Nis jardin CH13-18

Shutter 101
Zaallicht 102

